



# 2025 NFHS SOFTBALL PACE OF PLAY DISCUSSION



**PLAY.  
PERFORM.  
COMPETE.  
TOGETHER.**

Copyright© 2024 National Federation of State High School Associations. All Rights Reserved.

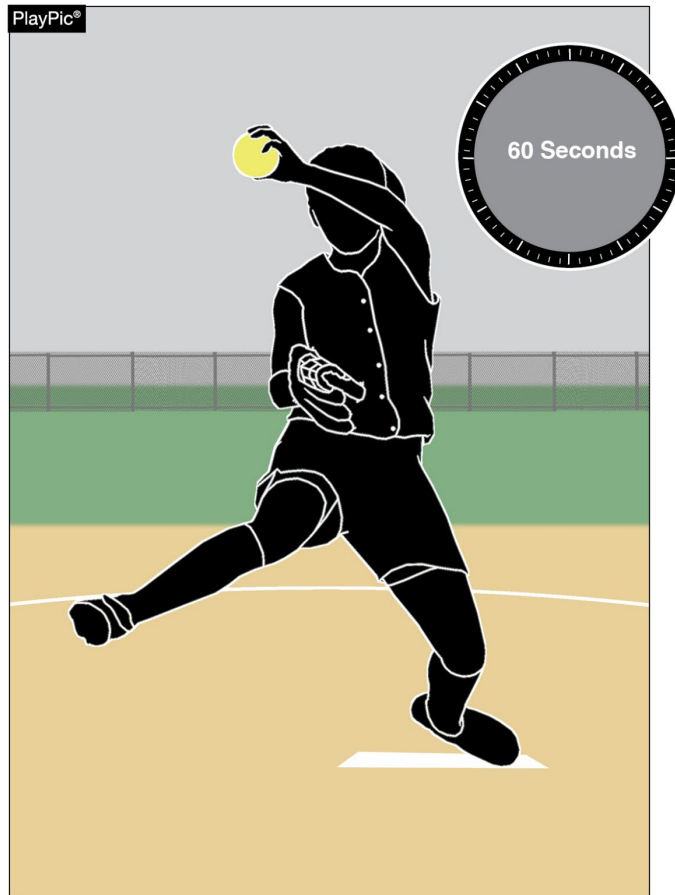
This copyrighted power point is presented by the NFHS. This material shall only be reproduced or distributed by member state associations for teaching and training purposes.

Distribution to the public is prohibited without the express written consent from the NFHS. Please contact Davis Whitfield, COO at [dwhitfield@nfhs.org](mailto:dwhitfield@nfhs.org) with requests.

# DISCUSSIONS CONTINUE ABOUT PACE OF PLAY

- NFHS POE for the last several years
  - Focused on time between innings
  - Reminder for umpires to maintain good game flow as a part of game management
  - Focused on coaches role in game flow
  - Reminder of timing between innings and timing aspects for batter and pitcher between pitches

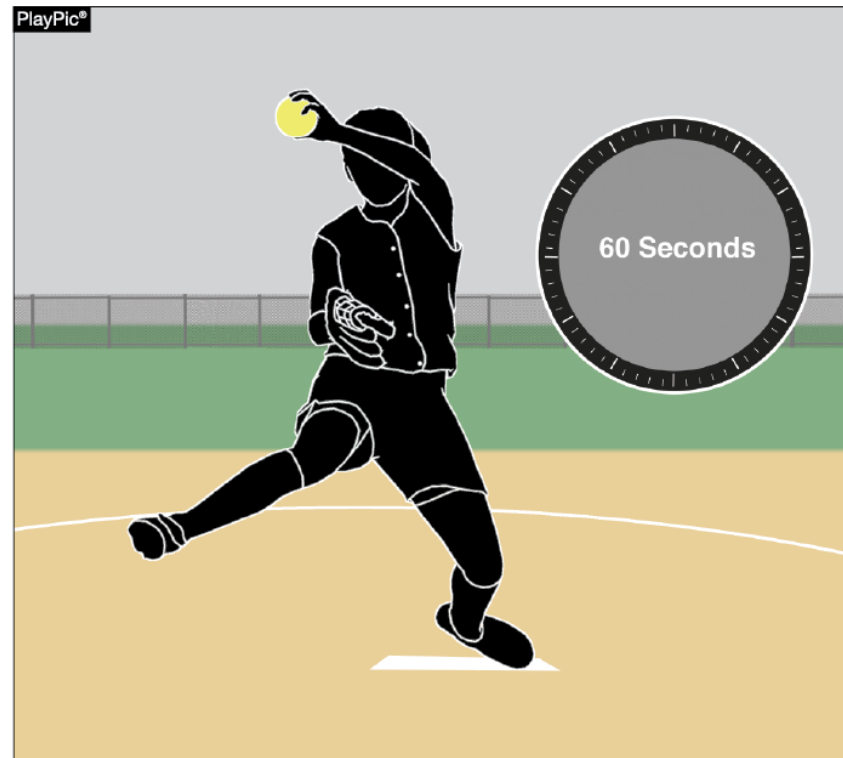
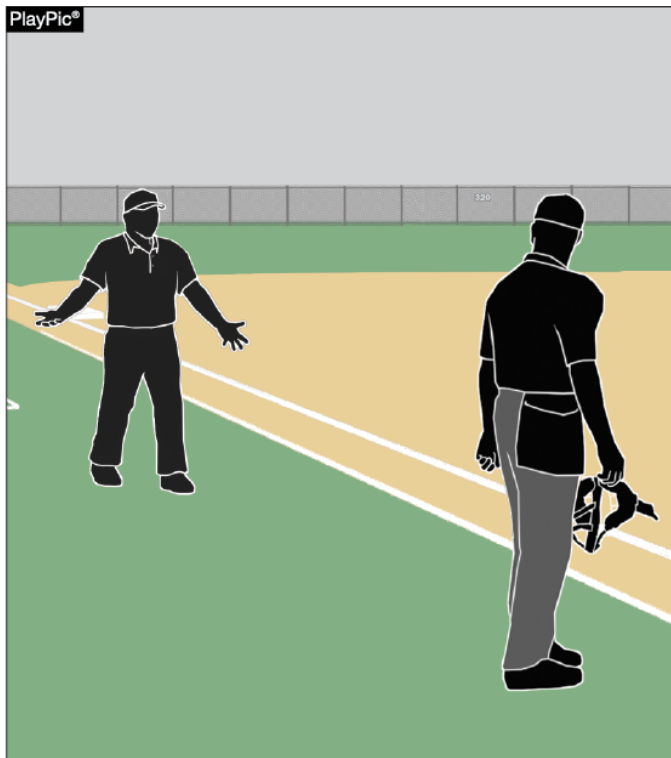
## TIME BETWEEN INNINGS 2022-23



- Umpires and coaches should pay strict attention to the 60-second time limit between half-innings.
- At the beginning of each half-inning no more than one minute may be used to deliver no more than five pitches to the catcher or other teammate.
- The one-minute time limit begins from the third out of the previous half-inning.
- A pitcher returning to the pitching position in the same half inning will not be granted any warm-up pitches.
- Umpires may authorize more pitches during inclement weather or if a pitcher was removed due to injury or by rule.



# GAME MANAGEMENT 2023-24



- Umpire and coach communication should be conversational, not confrontational.
- Professionalism should be followed by coaches and umpires to maintain a successful working relationship.
- Although umpires are not there to “rush” players, one of their responsibilities is to help maintain a good flow of the game.

## TEAM'S ROLE IN PACE OF PLAY 2024-25



There has been a lot of emphasis on pace of play the past several seasons. This year, the focus is on coaches, who play a vital role in creating and maintaining pace-of-play standards.

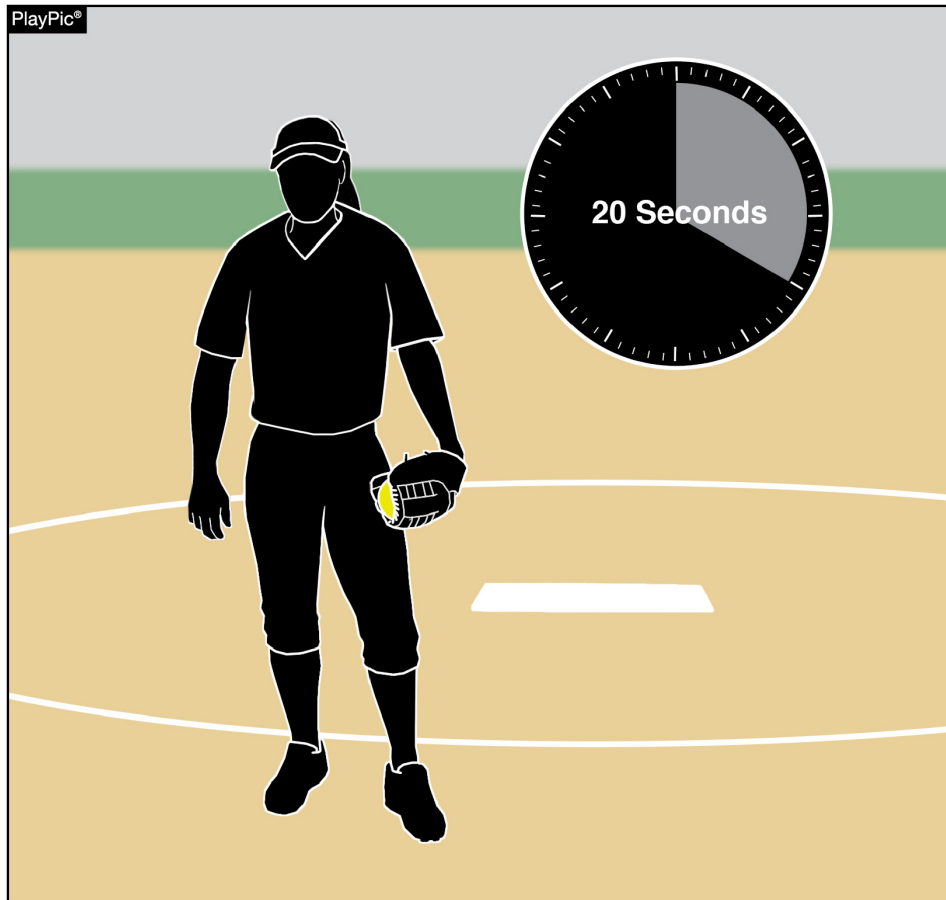
Between innings, 60 seconds is provided for the defense to take the field and throw warm-up pitches. If the catcher was batting when the inning ended, coaches should have another teammate prepared to receive warm-up pitches.

## TEAM'S ROLE IN PACE OF PLAY 2024-25



The offense also has 60 seconds to prepare to bat. While coaches may choose to huddle with their team as they come off the field, coaches should encourage their lead-off batter to gather their equipment and get ready to bat.

## TEAM'S ROLE IN PACE OF PLAY 2024-25

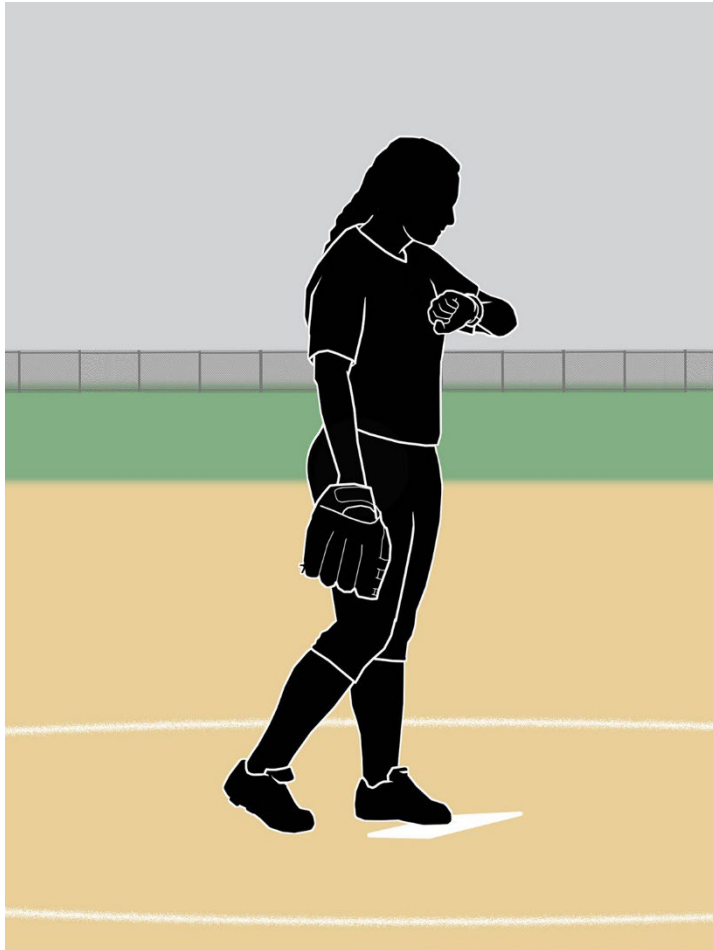


Once the 60 seconds between innings has elapsed, the batter has 10 seconds to enter the batter's box and the pitcher has 20 seconds to legally deliver a pitch.

The pitcher also has 20 seconds to release a pitch once the ball has been returned from a previous pitch and the batter has 10 seconds to enter the batter's box after the ball is returned.

A ball or strike is added to the count, depending on the tardy party.

## OTHER CONCERNS ABOUT PACE OF PLAY



- One item that has been mentioned is the perceived increase in time taken to call pitches
- There have been delays in coaches searching the playcard then relaying the call
- Resulting in increased time between pitches approaching or exceeding the 20 second allowance





# STATE ASSOCIATION BEST PRACTICES



**PLAY.  
PERFORM.  
COMPETE.  
TOGETHER.**





# OPEN DISCUSSION



**PLAY.  
PERFORM.  
COMPETE.  
TOGETHER.**





# QUESTIONS



**PLAY.  
PERFORM.  
COMPETE.  
TOGETHER.**



# THANK YOU

**National Federation of State High School Associations**

PO Box 690 | Indianapolis, IN 46206

Phone: 317-972-6900

*[www.nfhs.org](http://www.nfhs.org) / [www.nfhslearn.com](http://www.nfhslearn.com) / [www.nfhsnetwork.com](http://www.nfhsnetwork.com)*



**PLAY.  
PERFORM.  
COMPETE.  
TOGETHER.**